



## South Dakota's New Virtual Pipeline Safety Training Program!

The COVID-19 pandemic has temporarily changed how we do meetings. In order to accommodate those changes, pipeline operators are providing a virtual alternative to the traditional pipeline safety programs.

Mailing Distribution Facility  
P.O. Box 9123  
Wichita, KS 67277

PRESRT  
FIRST CLASS  
U.S. POSTAGE  
**PAID**  
PARADIGM



«Opt\_Endorsement\_Line»

«Z4\_ZIP4DP»

«LINE1»

«LINE2»

«LINE3»

«Address»

«City», «State», «ZIP»

**Attending agencies will be entered into a \$250 drawing!**

CEU Course Numbers Available: 9213A EMS, 9627 EMS

**REGISTRATION WEBCODE «Ident\_Code»**  
**rsvp.pdigm.com**



## VIRTUAL PIPELINE EMERGENCY RESPONSE TRAINING See Schedule Inside

**1** Register your department at [sdpa.pipelineawareness.org](http://sdpa.pipelineawareness.org)

- All responders can attend

**2** At the Virtual Pipeline Safety Training you will receive:

- Up to date pipeline materials with contact information
- Communication with your local pipeline operators



CEUs Offered by:  
South Dakota Law Enforcement Standards and Training Commission  
South Dakota Department of Public Safety  
South Dakota Board of Medical & Osteopathic Examiners Course # 9213A  
South Dakota Department of Health Course # 9627

**More pipeline operators and first responders attend these programs than any other pipeline safety program in the nation.**

## ADDITIONAL PIPELINE INFORMATION



### HOW WOULD YOU KNOW WHERE A PIPELINE IS?

Most pipelines are underground. Pipeline rights-of-way are clearly identified by pipeline markers along pipeline routes.

#### Pipeline Markers

- Identify the approximate—NOT EXACT—location of the pipeline.
- Every marker contains information identifying the company that operates the pipeline, the product transported, and a phone number that should be called in the event of an emergency.
- Markers do not indicate pipeline burial depth, which will vary.
- Markers are typically seen where a pipeline intersects a street, highway or railway.
- It is a federal crime for any person to willfully deface, damage, remove, or destroy any pipeline marker.



### RECOGNIZING A PIPELINE LEAK

#### Sight:

- Liquid pools
- Continuous bubbling in wet or flooded areas
- Oily sheen on water surfaces
- Vaporous fogs or blowing dirt around a pipeline area
- Dead or discolored plants
- Frozen ground in warm weather
- Natural gas:
  - Colorless
  - Vapor and “ground frosting” may be visible at high pressures.
- Natural gas leaks:
  - Indicated by dust blowing from a hole in the ground
  - Flames if the leak is ignited.

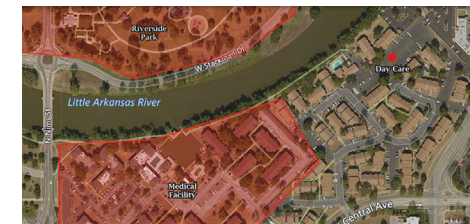
#### Sound:

- Quiet hissing to a loud roar depending on the size of the leak and pipeline system.

#### Smell:

- An unusual smell, petroleum or gaseous odor.
- Natural Gas and Highly Volatile Liquids (HVL) Colorless, tasteless and odorless unless odorants, such as Mercaptan, is added.

Most HVLs contain a slight hydrocarbon or pungent odor. Most are non-toxic; however, products such as ammonia are considered a toxic chemical and can burn the senses. If inhaled HVLs may cause dizziness or asphyxiation without warning.



### IDENTIFIED SITE REGISTRY

Pipeline operators need your help keeping people and property safe.

Identified Sites - locations where many people occupy an area near a pipeline asset or facility. These are places where people may gather from time to time for a variety of reasons.

Some of these sites are very difficult for companies to obtain without help from those with local knowledge of the area.

Please use the following website to gain secure access, so you can assist in identifying sites where people congregate in your community:

<https://my.spatialobjects.com/admin/register/ISR>

Pipeline operators are required by law to work with public officials who have safety, emergency response, or planning responsibilities that can provide quality information regarding identified sites.



## \$1,000 DONATED ANNUALLY TO SOUTH DAKOTA EMERGENCY RESPONDERS

#### 2020 RECIPIENT NE Region

\$250 Donation

Castlewood VFD

#### 2020 RECIPIENT NW Region

\$250 Donation

Sturgis VFD

#### 2020 RECIPIENT SW Region

\$250 Donation

Edgemont VFD

#### 2020 RECIPIENT SE Region

\$250 Donation

Mitchell Fire Department



# 2021 SOUTH DAKOTA PIPELINE ASSOCIATION EMERGENCY RESPONSE EXERCISE

## TACTICAL PIPELINE RESPONSE TRAINING

### NEW DISCUSSION BASED SCENARIO EXERCISES

First responders receive updated information and create relationships with your local pipeline operators and gas distribution companies.

- **Learn** - Do we have a pipeline emergency? Where is the product release? Should emergency responders shut down the pipeline?
- **Acquaint** - Whom do we notify? Work through a simulated product release with your local pipeline operator.
- **Identify** - Is there an immediate threat to life or property?
- **Plan** - Do we need to start an evacuation or other public protective action? Will other resources (local, state, federal, private industry) be required?
- Discuss local pipeline sizes, locations, products, and operating pressures in the area.



## REGISTRATION

To register please visit [sdpa.pipelineawareness.org/upcoming-sdpa-meetings](https://sdpa.pipelineawareness.org/upcoming-sdpa-meetings). Select the meeting you wish to register for. Once completed you will receive a confirmation email with links and instructions on how to join the virtual meeting. For questions or additional information, contact us at (844) 693-7788 or visit our website at [sdpa.pipelineawareness.org](https://sdpa.pipelineawareness.org).

## 2021 SDPA OPERATORS

|  |              |
|--|--------------|
| Basin Electric Power Cooperative.....              | 800-339-5616 |
| Black Hills Energy .....                           | 307-757-3010 |
| Bridger Pipeline LLC .....                         | 866-305-3741 |
| City of Sioux Falls .....                          | 866-412-2254 |
| Crooks Municipal Gas .....                         | 888-214-7225 |
| Dakota Access Pipeline.....                        | 800-753-5531 |
| Garretson Natural Gas .....                        | 888-320-2426 |
| Humboldt Gas Utility .....                         | 888-320-1490 |
| Magellan Midstream Partners, L.P. ....             | 800-720-2417 |
| MidAmerican Energy Company .....                   | 800-595-5325 |
| Montana-Dakota Utilities Co. ....                  | 800-638-3278 |
| Northern Natural Gas .....                         | 888-367-6671 |
| NorthWestern Energy.....                           | 800-245-6977 |
| NuStar Pipeline Operating Partnership, L.P.....    | 800-759-0033 |
| SD Intrastate Pipeline Company.....                | 800-852-0949 |
| TC Energy - Keystone Pipeline.....                 | 800-447-8066 |
| TC Energy - Keystone XL .....                      | 800-447-8066 |
| TC Energy - Northern Border Pipeline Company ..... | 800-447-8066 |
| Watertown Municipal Utilities .....                | 605-882-6233 |
| WBI Energy Transmission.....                       | 888-859-7291 |
| Xcel Energy .....                                  | 800-895-2999 |

## REGISTER AT SDPA.PIPELINEAWARENESS.ORG



Meetings subject to change. Please visit [sdpa.pipelineawareness.org](https://sdpa.pipelineawareness.org) for updates and to learn more about your local pipeline operators.

You may attend any meeting but the meeting in your area will have pipeline operators that are local to the area.

| #  | Area          | Date     | Time               | Time Zone |
|----|---------------|----------|--------------------|-----------|
| 1  | Buffalo       | 01/19/21 | 6:30 PM            | MST       |
| 2  | Belle Fourche | 01/20/21 | 6:30 PM            | MST       |
| 3  | Rapid City    | 01/21/21 | 6:30 AM / 10:00 AM | MST       |
| 4  | Hot Springs   | 01/21/21 | 6:30 PM            | MST       |
| 5  | Winner        | 01/25/21 | 6:30 PM            | CST       |
| 6  | Pierre        | 01/26/21 | 10:00 AM / 6:30 PM | CST       |
| 7  | Mobridge      | 01/27/21 | 6:30 PM            | CST       |
| 8  | Aberdeen      | 01/28/21 | 10:00 AM           | CST       |
| 9  | Watertown     | 02/01/21 | 6:30 PM            | CST       |
| 10 | Brookings     | 02/02/21 | 10:00 AM           | CST       |
| 11 | Huron         | 02/02/21 | 6:30 PM            | CST       |
| 12 | Mitchell      | 02/03/21 | 10:00 AM           | CST       |
| 13 | Vermillion    | 02/03/21 | 6:30 PM            | CST       |
| 14 | Sioux Falls   | 02/04/21 | 10:00 AM / 6:30 PM | CST       |

